



SPUR LINE

Volume 44, Issue 1

January 2010

© Copyright 2010 Arizona Division, PSR, NMRA

SPRING MEET - ARIZONA DIVISION, PSR, NMRA Saturday, March 6, 2010 - Phoenix, Arizona

DEPOT **First Southern Baptist Church of Phoenix**
3100 W. Camelback Rd, Phoenix, AZ (*Locator map on last page*)
Meet Contact: Art Carlton (520) 560-3368

REGISTRATION \$7.00 - Coffee Provided; FREE - If you join the NMRA at Registration.
\$3.00 - If NMRA member under 21 years of age.
(*Bring your membership card.*)

SCHEDULE

- 9:00 am - Registration opens. Enter contests until noon.
- 10:00 am - CLINIC: Construction of a Multi-level Model Railroad; Large Model Railroad in a Small Room by Jim Hanna
- 11:00 am - Business Meeting and door prize drawings
- 11:45 am - Break for lunch at a restaurant of your choice
- 1:00 pm - CLINIC: Thinking Outside of the Box By Helen Smith
- 1:30 pm - CLINIC: Modeling a Pond and Surrounding Scenery by Art Carlton
- 2:30 pm - CLINIC: Santa Fe Superintendents Cars by Ken Rhoads
- 3:15 pm - Announce contest winners, door prize drawings.
- 3:45 pm - Layout Tours – Flyers available at the meet

CONTESTS

A complete line up of NMRA contests is planned. We are including Levity, Favorite Train and the ever popular photo contest. The Favorite Train subject will a Motive Power Reposition. Levity will be the same. Trains are a maximum of ten locomotives. Bring your favorite model for the popular vote Favorite model contest and share it with other attendees. You must be a member of the NMRA to enter contests.

Give our contests a try. You may win an award!

SWAP MEET:

Tables will be available at 8:30 AM after the sellers' registration is paid. There is no fee for tables, but only Arizona Division members are allowed to sell. Anybody can buy! Please only one table per seller until everybody has a table.

**Please note all swap meet sellers must be NMRA members and must register.*

RAILETTES: A fun & exciting project activity is planned for the ladies. We promise that you are going to laugh and have a good time making it. Come join in on the fun!

In This Issue:

Spring Meet in Phoenix..... 1
Superintendent’s Corner..... 2
Direct from the Director..... 4
Chief Clerk & Paymaster Report..... 7
Sedona Contest Room and Results..... 8
Achievement Program..... 12
Coming Events..... 15
Raillettes 16
Roster..... 17
Arizona Clubs..... 17
Phoenix Meet Locator Map 18





Special thanks to the **Arizona Southwestern Model Railroad Society** for joining us. The club set up a very nice layout on the Junior League's patio.

They also braved the rain!!!

Great job guys!







SUPERINTENDENT'S CORNER

BY: ART CARLTON

Model Railroad Mentor, Part II

With my new power supply safely secured in the front seat of my pick-up truck, I proceeded home on cloud nine. Life was good that year. I passed my two vocational classes, and I had scratch built a new power supply unit for my layout. However, there was still the second item he agreed to assist me with, and I was going crazy not knowing.

A few days before school let out for summer break, Bruce invited me over to his house to show me his train collection. I did not hesitate one second when I replied with, "When?" He chuckled a little while shaking his head side-to-side and agreed to meet that coming Saturday evening.

When I arrived that Saturday, Bruce was scratch building several O-scale interurban cars on a card table in his living room. He stopped building long enough to introduce me to his wife, Helen, and show me just a small part of his collection, which at that time I thought was a lot of model trains. It was not until after he built his 3,000 sq. ft. building did I realize what I saw that Saturday night was just the tip of the iceberg.

I spent a good three hours with Bruce that evening discussing trains and the techniques on scratch building. As he showed me one O-scale model after another that evening, I began to hear a little voice in my head convincing me to convert from HO to O.

Bruce and I met several times that summer to discuss my interest in trains. It was during this period of time he introduced me to narrow gauge railroads . . . everything from Maine's two-footers to Colorado's three foot gauge. The more he talked about the topic, the more that little voice was convincing me to convert.

That fall I read a lot on the Maine two-footers and fell in love with them. So much so I was determined to build a two foot gauge layout and I strongly expressed that to Bruce. Bruce agreed it would be a nice line to model, but there were very few items on the market for such a scale. Majority of everything would have to be scratch build, and this my friends was the beginning of Bruce fulfilling my second wish . . . scratch building models.

My first scratch built model was a Sandy River and Rangeley Lake R.R. pulp car. Then we moved on to a boxcar and eventually built an engine. After the engine we moved on to interurban equipment for Pacific Electric.

Over the next fifteen years, we met at least once a week to build trains. We even took field trips to chase trains. I remember going to Nogales, Mexico with Bruce and Helen in search of old S.P. cars to photograph. There was also the time we attended the narrow gauge convention in Durango and during the trip we photographed A.T.S.F. equipment. What a great trips these were.

It was early March, 1999, when Bruce unexpectedly passed away. Helen and I discussed what should be done with his collection, and we agreed to create a model railroad museum. This task took longer than I thought and a few years ago IRS had officially declared The Bruce C. Smith Model Railroad Foundation a charitable organization. We continue to this day to prepare the layout for public viewing, and each day I work on this project I realize Bruce

**** WANTED ****

VOLUNTEERS TO CONDUCT CLINICS FOR THE SUMMER AND FALL/WINTER MEETS.

30-45-60 MINUTES SLOTS AVAILABLE.

CONTACT ART CARLTON AT

520-560-3368.

had fulfilled all three of my concerns; the last being expansion.

As I complete this article I can not stop thinking about how much Bruce has taught me about this great hobby. He not only taught me how to scratch build models, but he had also taught me the importance of the history of railroading. I continue to use the techniques he shared with me some twenty-five years ago. I also volunteer to teach railroad history at our local college and any local community organizations. With this said, I ask you take a few minutes to be a mentor and teach someone about this great hobby. You will not only pass on an important part of our culture, but you may just pass on your legacy for future generation.

**** WANTED ****

**GOOD QUALITY MODEL KITS, TOOLS, RR EQUIPMENT, ETC.
FOR DOOR PRIZES AT THE MARCH 6TH MEET IN PHOENIX.**

The 2011 PSR Regional Convention is Coming to Flagstaff!!!

***What:* PSR 2011 Regional Convention**

***When:* September 21 – 25, 2011**

***Where:* Flagstaff – Radisson Hotel?**

What can you do? Help make it a huge success!

Need volunteers for planning, clinics, contests, etc.

Contact: Larry Gibbs, Flagstaff Model RR Club

Flagmrrc@gmail.com or (928)699-3449

SPUR LINE SUBSCRIPTIONS ARE COMING!

One of the most significant expenses for our division is the cost of producing the print version of the Spur Line. For the last issue, we spent over \$600 dollars just for the last issue. The bottom line is that we spend over \$1500 per year for the print version. Arizona is the only division in the PSR not charging for the print version, and we have the fewest subscribers to our electronic newsletter. We do realize that not everyone has internet access and we still want to make the Spur Line available to them.

Art, Richard and Rick have agreed that the only way for us to avoid operating in the red is to ask members to pay a subscription for print version of the Spur Line. Our goal is not to render a profit, but to cover the costs to print and mail the print version of the newsletter. So, effective September 1, 2010, we will begin charging an annual subscription. The fee will be \$5.00 per year which will cover the printing and mailing costs for the three issues per year.

There is an alternative. If you have internet access and email, you can receive the electronic version for free.

If you have any questions, comments, or concerns, please contact Art, Richard, or Rick



DIRECT FROM THE DIRECTOR

BY: RICK WATSON

Thanks to everyone who joined us at the last meet in Tucson. A special thanks to the Arizona Southwestern Model Railroad Society for setting up a N-Trak modular layout in the patio of the Junior League. They worked diligently to get their layout set up and despite some rain, they had trains running. Talk about prototypical!

At the meet we had some great clinics and contest room entries! Thank you to Rick Wheeler for running the meet. Rick did such a good job, I'm wondering if he wants to get the bell back! Thank you to Alan Barnes for running the contest room. Both Art and Kevin had work related issues which prevented them from joining us for the meet.

We had quite a variety of models in the contest room. It was a lot of fun judging this time. I was very impressed with the quality of models. Also, perennial levity entrant John Stockton outdid himself by entering four different levity models. Including the model railroader's version of the Balloon Boy.

Layout tours were available after the meet. Thanks to all the layout tour hosts. I know the division members enjoy seeing your layouts. I was fortunate enough to be able to help out Paul Chandler run his layout during the open house. Paul hosted a small operating session during the open house. It was a lot of fun and I had a good time as dispatcher.

As many of you read in my last column, I was very concerned about the Arizona Division being able to host the 2011 PSR Regional Convention. As I wrote, we had no volunteers and were at risk of forfeiting the convention. Fortunately, the gents in Flagstaff have volunteered to organize and host the convention. I hope to have more details in an upcoming column. Our summer meet will be in Flagstaff and I'm sure Larry Gibbs and company will have even more information. I've had some members volunteer to help. If you're interested in helping with the convention, please let me know.

I've spent most of the last year working on my own railroad. I've been fortunate enough to go from concept to first operating session in eleven months. While the layout is mechanically complete, I have a lot of buildings and scenery to do. Those who know me may be a little shocked to hear me speak of scenery as I've always been a 'Plywood Pacific' kind of modeler. But, not that I have a layout of my own, my motivation seems to have changed.

This raised a thought to me about getting igniting new passions in the hobby. I've done scenery in the past. On my modules and friends' layouts. However, it was always a chore. Now, for whatever the reason,

I'm interested in doing scenery. Perhaps, because it's on my layout. But, I've been in a modular club for 6 years, and never had this enthusiasm before. Whatever the reason, I'm now excited about scenery, building structures, and continuing to make my layout evolve. I have no illusion of ever call-



ing my layout. And, I'm not sure you can ever be 'complete'. I think it becomes a continual process of refinement. Sure, we've all read the magazines, and have heard authors talk about being complete, but for me I don't think that state exists. While I'll be working toward that higher level of completion, I recognize that I probably won't attain the goal of 'complete.'

How do you feel about that? Do you believe that you layout will reach the stage where you consider it complete? I'd like to hear your thoughts.



**WE ARE STILL LOOKING FOR A MEMBERSHIP CHAIRMAN...
HOW ABOUT YOU?**

We do not have a Membership Chairman for the Arizona Division.

The role of Membership Chairman is key to the success of our division. The chairman works to promote the division, the PSR and the NMRA at railroad related events within the division.

If you're interested in this role, please contact Art or Rick for more information.





CHIEF CLERK & PAYMASTER REPORT

BY: RICHARD DICK

We had a great turnout in Tucson, Nov. 14. There were 101 attendees registered and we had 5 new NMRA members. That's great news, and we are happy to see more people coming to our Meets.

We had a big expense this past period for the Contest Awards. We do buy plaques and ribbons well on advance, so this expense will cover the needs for several years. The Meet expenses still exceeded the Meet Revenue by \$43.39. That amounts to 7 more attendees to break even on this Meet; every person makes a difference!

We now have the new Arizona Division pins. They are still priced at \$3.50 each. And we still have a good selection of pins, patches, T-shirts and freight cars available. Stop by and see me after the big registration rush is over to buy these items!

The balance sheet for the period from September to December 2009 is included for your information:



Account Balance, August 31 , 2009 \$7,229.82

Revenue:

Division Meet: Nov. 14, 2009:
 Attendance Fees \$686.00
 Sales, Pins and Patches \$23.50
 Sales, Convention Cars \$10.00
 Donation \$5.00
 NMRA Dues \$9.95
 Total Meet Revenue \$734.45

Total Revenue \$734.45

Expenses:

Division Meet: Nov. 14, 2009:
 Club/Hobby Shop Flyer Postage \$37.53
 Kwik Kopy - News letter/posters/flyers \$498.82
 Tucson Meet Facility Expense \$225.00
 NMRA Certificate of insurance \$10.00
 Layout Tour Map Copies \$6.49
 Railette Expenses \$0.00
 \$777.84

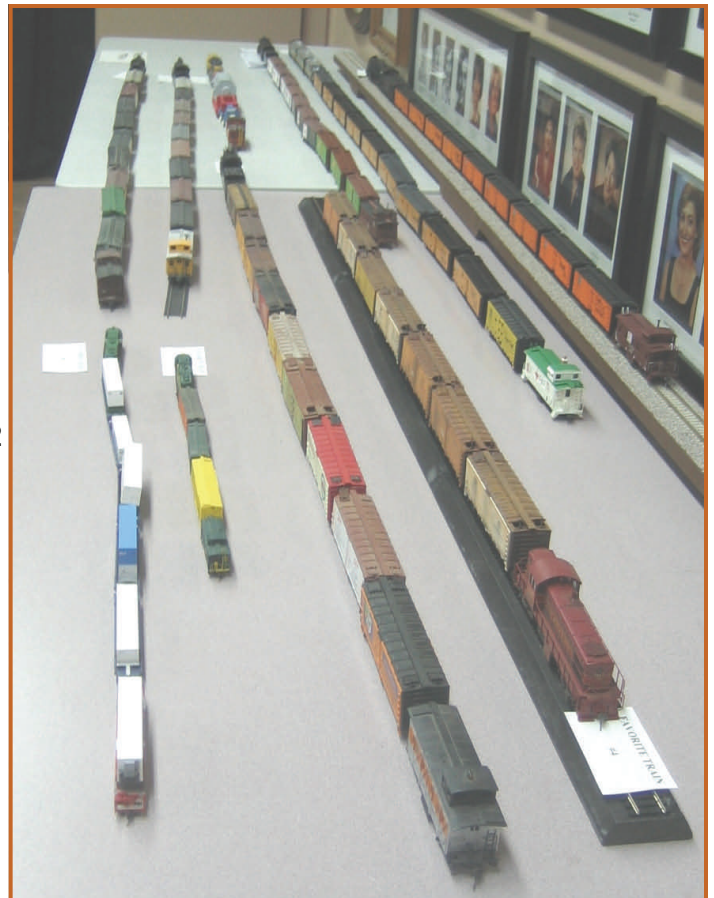
Other Expenses:
 Bank Fees \$33.08
 Contest Awards \$890.26
 NMRA Dues \$9.95
 \$933.29

Total Expense \$1,711.13

Income -\$976.68

Account Balance, Dec. 31, 2009 \$6,253.14

Favorite Train entries!



FROM THE CONTEST ROOM

BY: KEVIN LOOFF

I must first apologize for not being able to attend the recent Division Meet in Tucson. There was a deadline that had to be met at my job that kept me from attending. From looking at the Model and Photo Contest Entry sheets, there appear to have been a number of good entries in both contests. There were 10 model entries and 11 photo entries displayed in the contest room.

Don't forget to bring your models and photos to the upcoming Division Meet in Phoenix. As always, there is plenty of room for more entries. Models that have been entered in previous contests and did not win first place can be reworked using the feedback from the Judge's Comment Sheets and re-entered. Even models that took first place in a category but did not earn a Merit Award can be brought back and re-judged for Merit Award consideration. These models, however, cannot be part of the contests.

One area we have seen where modeler often can score more points is in the Conformity category. When you bring a model to the contest, you can definitely help your score by bringing documentation that shows your model conforms to a prototype.

If you have a model or project that you would like to show off regardless of the amount of completion and not be in the judged contest, don't forget about Lenny's Challenge. This is your chance to "bring and brag" any model railroad project and let people see what you are working on.

Before presenting the results for the contests, I have to thank Alan Barnes for running the contest room in my absence. Alan also wanted me to thank Richard Petrina who provided much needed assistance in the contest room.

Alan and I would like to say thank you to all who helped by being a judge for the contest and those who helped break everything down when it was over.



Favorite Train
entries!



**BEST IN SHOW – ALAN BARNES, MMR
CONGRATULATIONS!**



CONTEST RESULTS - TUCSON DIVISION MEET*NOVEMBER 14, 2009***Model Construction:** (* Indicates Merit Award)**Best In Show**Quench Car* – *Alan Barnes, MMR***Rolling Stock—Open**

- 1st Place – D&RGW Boxcar – *Nick Buckholz*
- 2nd Place – TP & SD Caboose – *Nick Buckholz*
- 3rd Place – TP & SD Caboose – *Nick Buckholz*

Rolling Stock—Kit

- 1st Place – D&RGW Long Caboose* – *Don Stewart*

Structures – Open

- 1st Place – Medras Tacos – *Tim Gilliard*
- 2nd Place – Chama Sand House – *Nick Buckholz*

Structures – Kit

- 1st Place – Scott Wire & Cable – *Gilbert Hendry*
- 2nd Place – Mulholland Plumbing – *Helen Smith*
- 3rd Place – Schaefer Brewery – *Myke Bruessel*

Note: In the category where there was no first place winner, there was insufficient point total (76) to allow a first place award in accordance with Arizona Division Contest rules.

Levity - Gondolas

- 1st Place – Flying Gondolas – *John Stockton*
- 2nd Place – Clinton Rod Works – *Dave Allen*
- 3rd Place – Venice Gondola – *John Stockton*

Favorite Train - Reefers

- 1st Place – *Steve Field*
- 2nd Place – *John Stockton*
- 3rd Place – *Bob Nuss*

Favorite Model

- 1st Place – Scott Wire & Cable – *Gil Hendry*
- 2nd Place – Medras Tacos – *Tim Gilliard*
- 3rd Place – Schaefer Brewery – *Myke Bruessel*

Photography

Model - Color

1st Place – GM&O SD40 – *Bob Libbey*

Prototype - Color

1st Place – Workin' in the Rain – *Don Stewart*

2nd Place – Road to Nowhere – *Bob Libbey*

3rd Place – Little Rocky Will Just Have to Wait – *John Almond*

Prototype - B&W

1st Place – Tucson Rapid Transit – *John Wolfe*

2nd Place – Slater MO Depot – *Bob Libbey*

Slide

1st Place – CB&Q 4960 @ Rockford, IL – *Allen Greger*

CONGRATULATIONS!

KEEP ON BUILDING THOSE MODELS

MAKE SURE TO BRING YOUR

MODELS, PHOTOS, AND LENNY'S CHALLENGE ENTRIES

TO PHOENIX ON MARCH 6!!!



Rolling Stock Kit
1st place
Don Stewart



Rolling Stock Open
1st, 2nd & 3rd places
All models by
Nick Buckholz



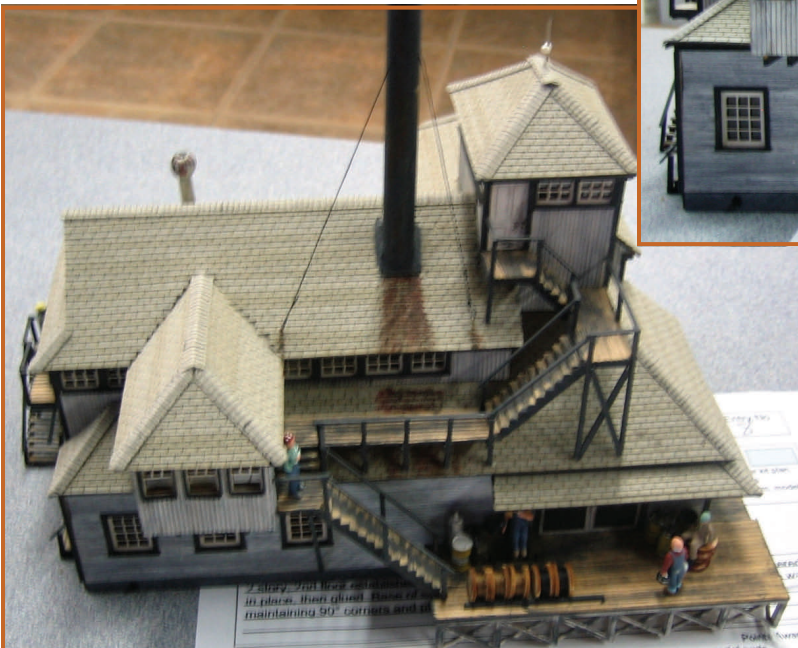


Structures Open
1st place
Tim Gilliland





Structures Kit
1st place
Gil Hendry





Structures - Kit
2nd place
Helen Smith

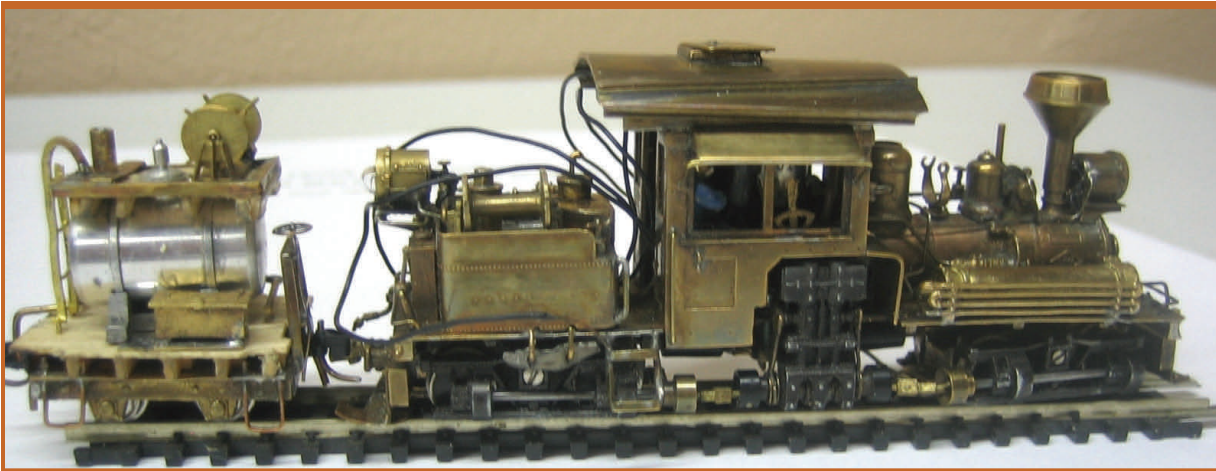


Structures - Open 2nd place *Nick Buckholz*

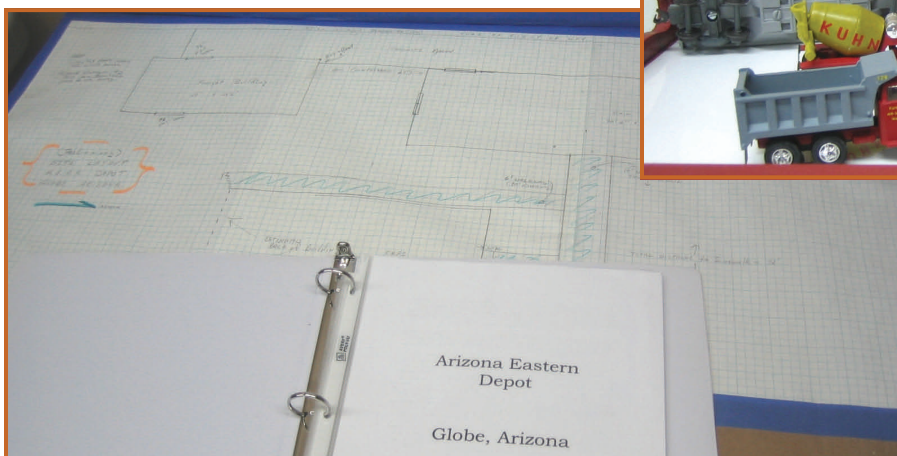
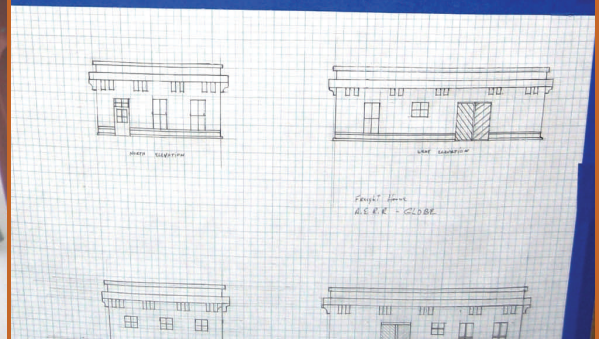
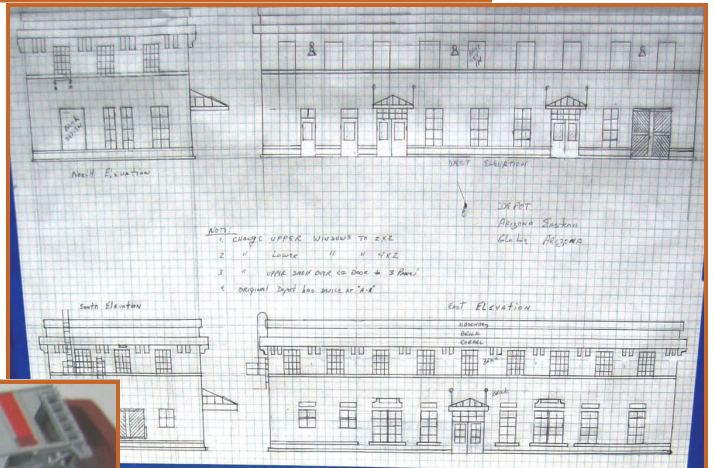


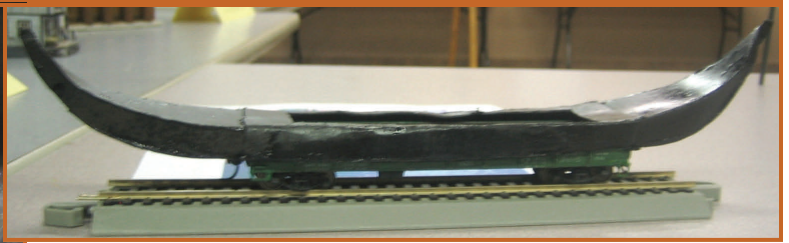
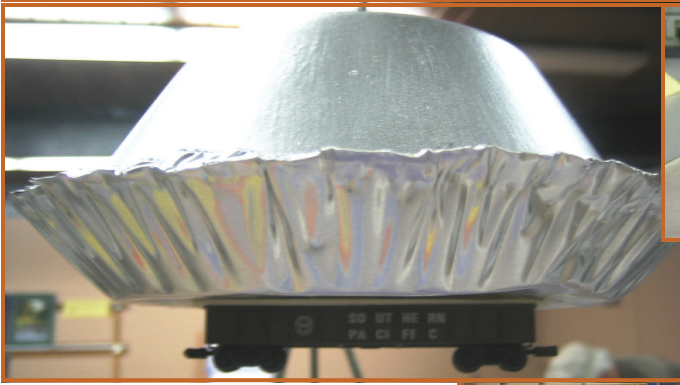
Structures - Kit
3rd place
Myke Bruessel





LENNY'S CHALLENGE



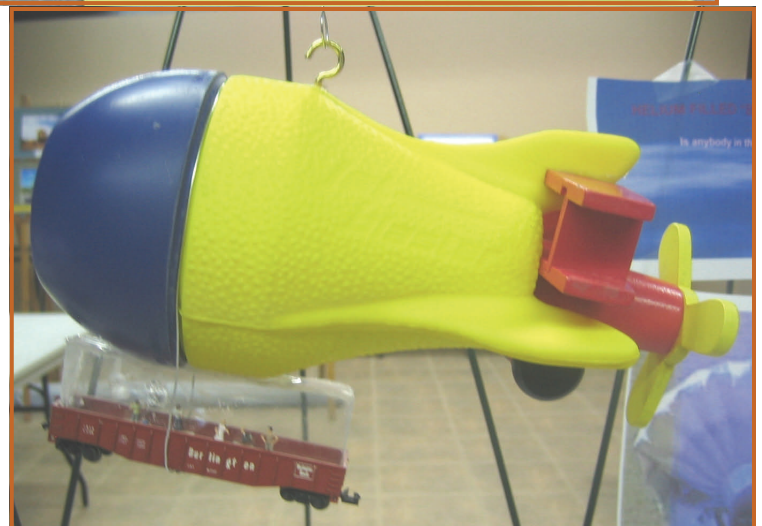


Levity!!!

The category was gondolas.

*1st & 3rd places
John Stockton*

*2nd place
Dave Allen*





ACHIEVEMENT PROGRAM

BY: DON STEWART

An AP Certificate was earned by Bruce Petrarca in December 2009. It will be presented at the Phoenix AZ Division Meeting.

Number	Name	Division	Certificate Type
281	Bruce Petrarca	Arizona	Chief Dispatcher

I forgot to bring Joe Skamel's 2 certificates (Association Official and Association Volunteer) to the November Division Meeting. I will bring them to the March Meeting.

David Irick's Master Builder- Structures was presented at the November Division Meeting.

**FOR MORE INFORMATION ON THE ACHIEVEMENT PROGRAM
CHECK THE NMRA WEBSITE AT: WWW.NMRA.ORG/ACHIEVEMENT**

COMING EVENTS

<i>March 6, 2010</i>	Arizona Division Spring Meet - Phoenix, AZ
<i>June 12, 2010</i>	Arizona Division Spring Meet - Flagstaff, AZ
<i>July 11-18, 2010</i>	NMRA National Convention - Milwaukee, WI
<i>September 15-19, 2010</i>	PSR Annual Convention - San Diego, CA
<i>November 2010</i>	Arizona Division Fall Meet - Tucson, AZ
<i>March, 2011</i>	Arizona Division Spring Meet - Phoenix, AZ

EDITOR'S UPDATE

In the last issue of the Spur Line, I asked if anyone was interested in taking over the editor's role. Well, I had a few response, but I guess I didn't do a good sales job as I'm still editing! Hopefully the gents I talked with are still considering the job. Even if we could get a dedicated photographer, that would help. I would have liked to provide more pictures in this issue, but I was wearing too many hats, so I didn't take as many photos.

If you have an interest in being editor, I will welcome you. I'm more than willing to provide you training and help so that the next editor will be very successful.

RAILETTES

BY: JANET SPOONER

Hi Railettes,

Happy New Year to all of you. I hope you are going to make it a resolution to attend the Division Meets with your husband and come and join us in the Railette room. We have more fun, laugh harder, and gossip more than any group of women around. We also do make creative and lovely items, and many times these items are useful as well as decorative.

Before I go any further, I want to express my wholehearted thanks to Arliss Powll for organizing and putting on the clinic for the Railettes in Tucson. The seven ladies there learned something ingenious and decorative to make out of those hundreds of return address labels we get in the mail that we did not order, do not want, and aren't going to pay for anyway. Arliss put a lot of time and effort into getting everything just right so we could have an exciting and creative day. Thank you, Arliss, you are a good friend indeed. We cheerfully made several different pictures using only the decorative part of the label. For example, using Christmas labels, we made Christmas trees and using delicate looking labels we made hand fans that looked fantastic. (Sorry about that pun.)

Now to our meet in Phoenix in March, we are going to be making.....something. What, I am not sure right now. But you have my promise that it will be fun, fairly easy, and exciting. I have two different ideas, actually three, on what I want to show all of you to make but I am not sure which to do. I guarantee that I will make up my mind by the meet in March. I have too. If you need to know what we are going to make before you come my e-mail address and phone are in this Spur Line, Get in touch and we can talk about what you might be interested in doing and how we can get you to join us.

See you in Phoenix in March!





WEBMASTER'S UPDATE

In the last issue of the Spur Line I pointed out that I would be looking for a new Webmaster. I have a volunteer to take over the job, now I just need to find the time to make the transfer. Thanks to Marvin Crimm in Yuma for volunteering. My hope for Marvin and I to complete the transfer in February.

Recent updates to the website have included another club being added and some general updates to the calendar.

Spur Line Railroad Quiz

1. What Is the longest railroad bridge in the United States?
2. What is a car—mile?
3. What was the first Railway Charter in the United States?

Answers in the next e-Spur Line.

Quiz questions from "Quiz on Railroads and Railroading", 1940 courtesy of Allen Gross



ARIZONA DIVISION ROSTER

Director - Rick Watson

6231 S. Rita Lane, Tempe, AZ 85283 (602) 319-0265 email: Director@AzDiv-nmra.org

Superintendent - Art Carlton

1898 S. Private Drive, Casa Grande, AZ 85294 (520) 723-9212 email: Superintendent@AzDiv-nmra.org

Chief Clerk & Paymaster - Richard Dick

5948 E. Hawthorne Street, Tucson, AZ 85711 (520) 790-5356 email: Paymaster@AzDiv-nmra.org

Membership Chairman - Vacant

Contest Chairman - Kevin Looff

9018 E Range Rider Trail, Mesa, AZ 85207 (480) 274-4472 email: ContestChair@AzDiv-nmra.org

Achievement Program Division Mgr - Don Stewart

2722 E. Bighorn Ave., Phoenix, AZ 85048-8984 (480) 759-5019 email: APChair@AzDiv-nmra.org

Nominations Chairman - Lenny Smith

1747 N. Gilbert Ave., Casa Grande, AZ 85222 (520) 836-7683 NomChair@AzDiv-nmra.org

Raillette Chair - Janet Spooner

10015 W. Royal Oak Rd. Apt 138, Sun City, AZ 85351 (623) 977-6760 RailletteChair@AzDiv-nmra.org

Spur Line Editor - Rick Watson email: SpurLine@AzDiv-nmra.org

Webmaster - Rick Watson email: Webmaster@AzDiv-nmra.org

ARIZONA CLUBS**Flagstaff****Flagstaff Model Railroad Club**

Scales: HO, HOn3, and N

Contact: Larry Gibbs (928) 779-2282*On the web:* <http://ucc.nau.edu/~twp/railclub>**Goodyear****PebbleCreek Model Railroad Club**

Scales: HO and G

Contact: Gary Gelzer (623) 935-4870*On the web:* www.pcmrc.org**Phoenix****Black Canyon Model Railroad Club**

Scale: HO

Contact: Harold Shelton (602) 242-0751*On the web:* <http://www.bczraz.net/>**Grand Canyon State Model Railroaders**

Scale: HO modular

Contact: Bob Gibbs (480) 968-1760*On the web:* www.GCSMR.org**Ponderosa North**

Scales: Round Robin

Contact: Matt Furze - mattfurze@cox.net*On the web:* www.arizonarails.com/pncpage**Thunderbird Model Railroad Club**

Scale: HO

Contact: Larry Platt*On the web:* www.trainweb.org/tbird**Prescott****Central Arizona Model Railroad Club**

Scales: Multiple

Contact: Brent Schnitzius (928) 445-6560*On the web:* www.camrrc.com**Scottsdale****Scottsdale Model Railroad Club**

Scales: HO and HOn3

Contact: SMRC01C@ScottsdaleModelRRClub.org*On the web:* www.scottsdalemodelrrclub.org

....continued on next page

ARIZONA CLUBS**Scottsdale****Sun'N'Sand Model Railroad Club**

Scale: N

Contact: Mark Vanacore (602) 410-1110*On the web:* www.sun-n-sand.org**Sun City area****Sun City Model Railroad Club**

Scale: HO

Contact: Bob Batt (623) 734-6377*On the web:* <http://hometown.aol.com/newriverwestern/NRNW.htm>**Sun City West Model Railroad Club**

Scales: HO and N

Contact: Bob Butler (623) 556-5179*On the web:* <http://www.scwclubs.com/> then select Model Railroad**Tucson****Arizona & Southwest Model Railroad Society / Tucson NTRAK**

Scale: N

Contact: John Scott (520) 250-2800*On the web:* <http://home.comcast.net/~tucsonntrak>**Rincon West Garden Railroad Club**

Scale: G

Contact: John Lawrence - johnlaw1931@hotmail.com**Southern Arizona Society of Model Engineers (SASME)**

Scales: HO and HOn3

Contact: Richard Dick (520) 790-5356*On the web:* www.sasme.org**Yuma****Yuma Model Railroaders**

Scales: Multiple

Contact: Lee Stoermer (928) 344-9417*On the web:* www.yumamodelrailroaders.org

To have your club added to the list, please email your club info to SpurLine@AzDiv-NMRA.org



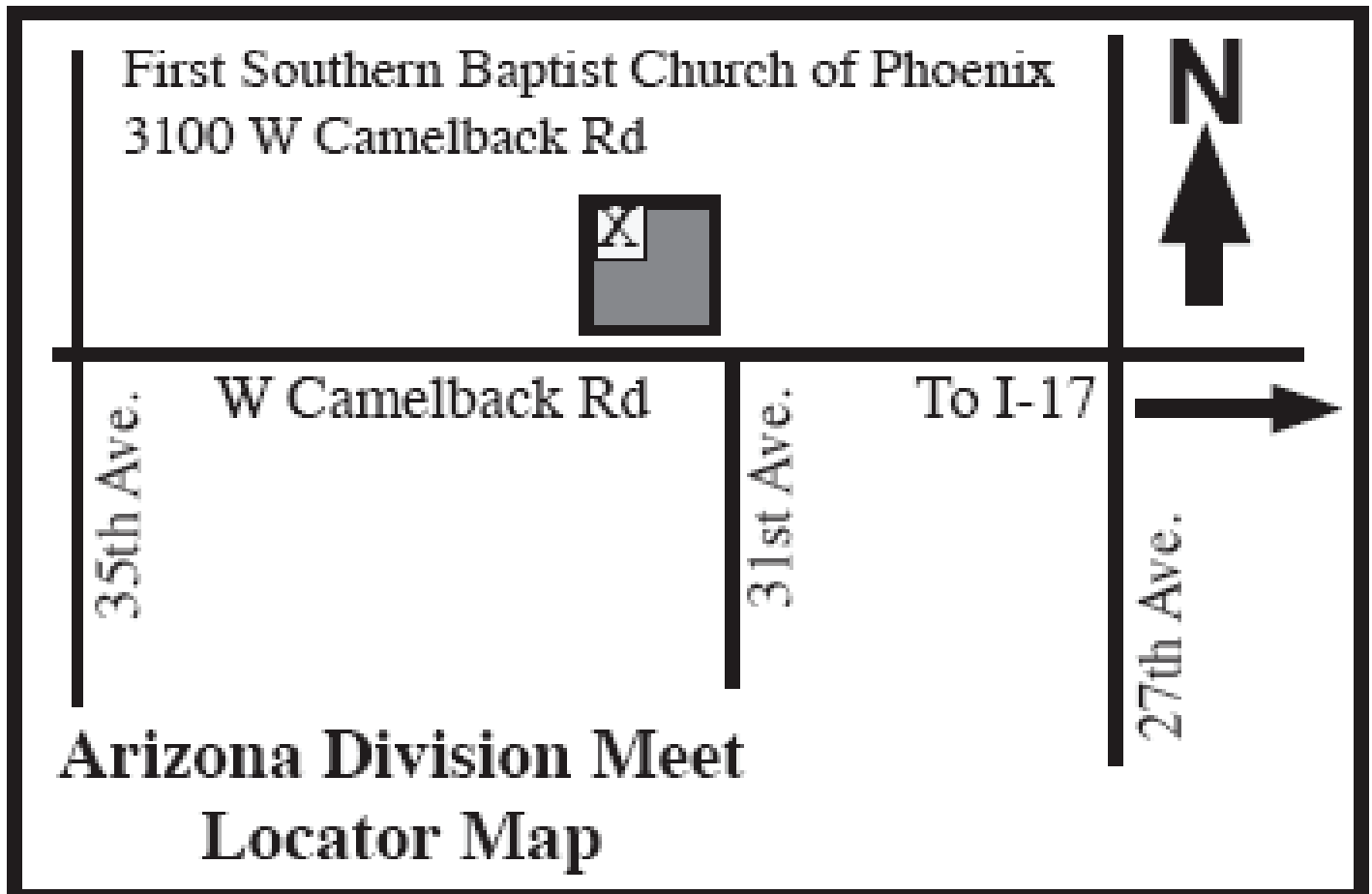
SPUR LINE
Official Publication of the
Arizona Division, PSR, NMRA
Rick Watson, Editor

SATURDAY, MARCH 6, PHOENIX, ARIZONA

Depot: First Southern Baptist Church of Phoenix, 3100 W. Camelback Rd, Phoenix

Directions: From I-17, exit at Camelback Road. Turn west. There is a traffic light at 27th Ave. The First Southern Baptist Church of Phoenix is located at the northwest quadrant of the 31st Ave and Camelback intersection. Go past 31st Ave. and turn into the parking lot. There will be signs directing you to the correct building.

Please park in the rear.



Join us in Phoenix—Bring your models!